

# 1720 Eastchester Road

Bronx, NY 10461



## 190,000 SF LOGISTICS CENTER FOR LEASE

63,000 SF Industrial Building

+ 127,000 SF Land

18' Clear Ceiling Heights

**JONATHAN SQUIRES**  
212.660.7775

[Jonathan.Squires@cushwake.com](mailto:Jonathan.Squires@cushwake.com)

**JOSHUA KLEINBERG**  
347.368.9160

[Joshua.Kleinberg@cushwake.com](mailto:Joshua.Kleinberg@cushwake.com)

**JOSH GOPAN**  
718.215.3000 x113

[Jgopan@simdev.com](mailto:Jgopan@simdev.com)



# 1720 Eastchester Road

Bronx, NY 10461

## Specifications



## Gross Leasable SF: 190,000 SF



<b>Building Size (Available)</b>	63,000 SF
<b>Rooftop Parking</b>	62,000 SF Floor Load 80lbs/SF
<b>Land</b>	~65,000 SF
<b>Plot (Total)</b>	3.65 acres
<b>Zoning</b>	M1-1
<b>Clear Height</b>	18'
<b>Loading</b>	4 Loading Docks (Existing) 3 Drive In Doors (Proposed)
<b>Electric</b>	3000amps @ 480 volts
<b>Gas</b>	Metered
<b>Availability</b>	Immediate

**JONATHAN SQUIRES**  
212.660.7775  
Jonathan.Squires@cushwake.com

**JOSHUA KLEINBERG**  
347.368.9160  
Joshua.Kleinberg@cushwake.com

**JOSH GOPAN**  
718.215.3000 x113  
Jgopan@simdev.com



 Metro-North Railroad  
MORRIS PARK STATION

(COMING SOON)



(300K SF)

 HUTCHINSON  
METRO CENTER

(1.4M SF)



• **1720**  
Eastchester Road

**JONATHAN SQUIRES**  
212.660.7775

[Jonathan.Squires@cushwake.com](mailto:Jonathan.Squires@cushwake.com)

**JOSHUA KLEINBERG**  
347.368.9160

[Joshua.Kleinberg@cushwake.com](mailto:Joshua.Kleinberg@cushwake.com)

**JOSH GOPAN**  
718.215.3000 x113

[Jgopan@simdev.com](mailto:Jgopan@simdev.com)

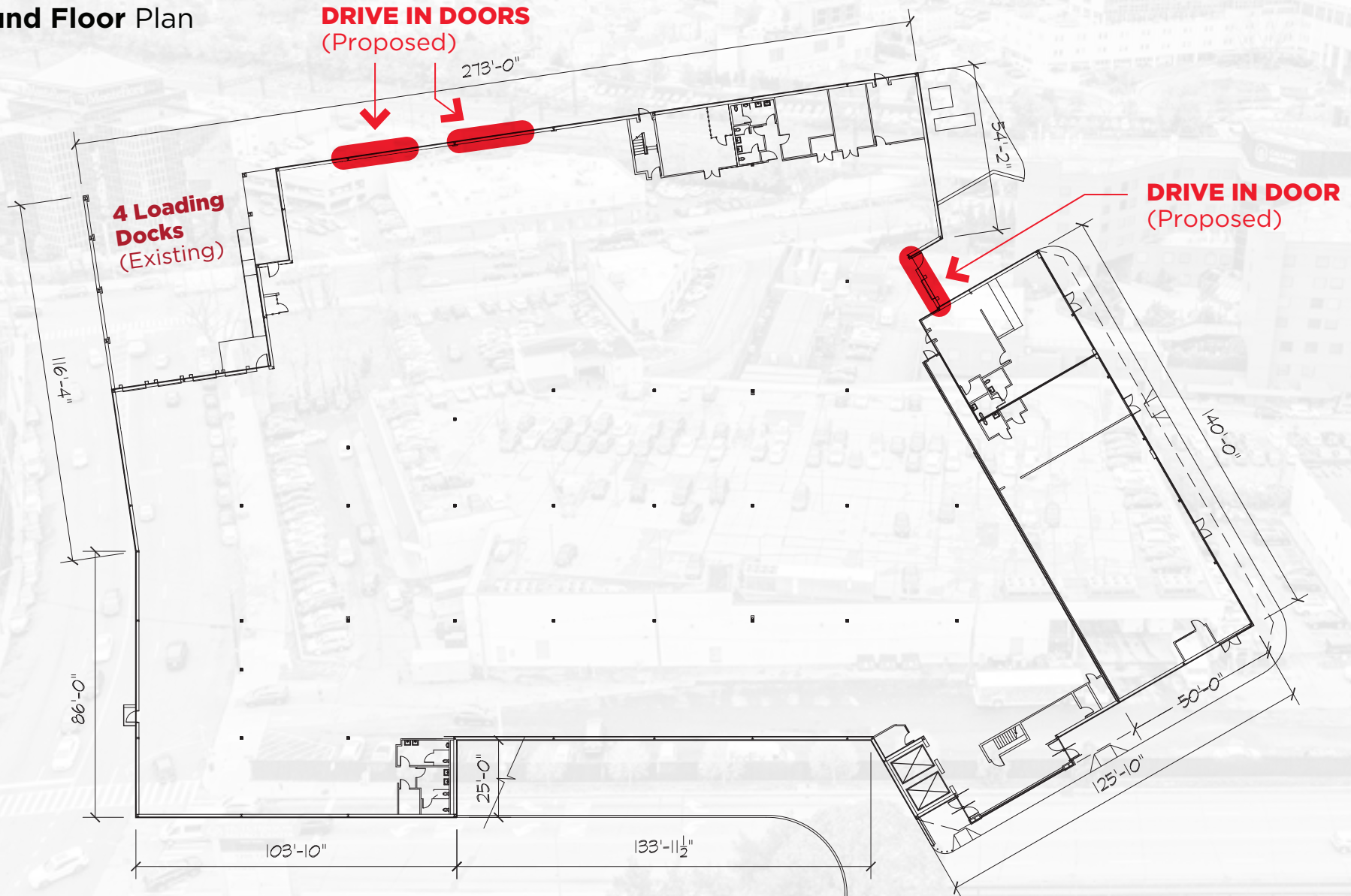


# 1720 Eastchester Road

Bronx, NY 10461



## Ground Floor Plan



**JONATHAN SQUIRES**  
212.660.7775  
Jonathan.Squires@cushwake.com

**JOSHUA KLEINBERG**  
347.368.9160  
Joshua.Kleinberg@cushwake.com

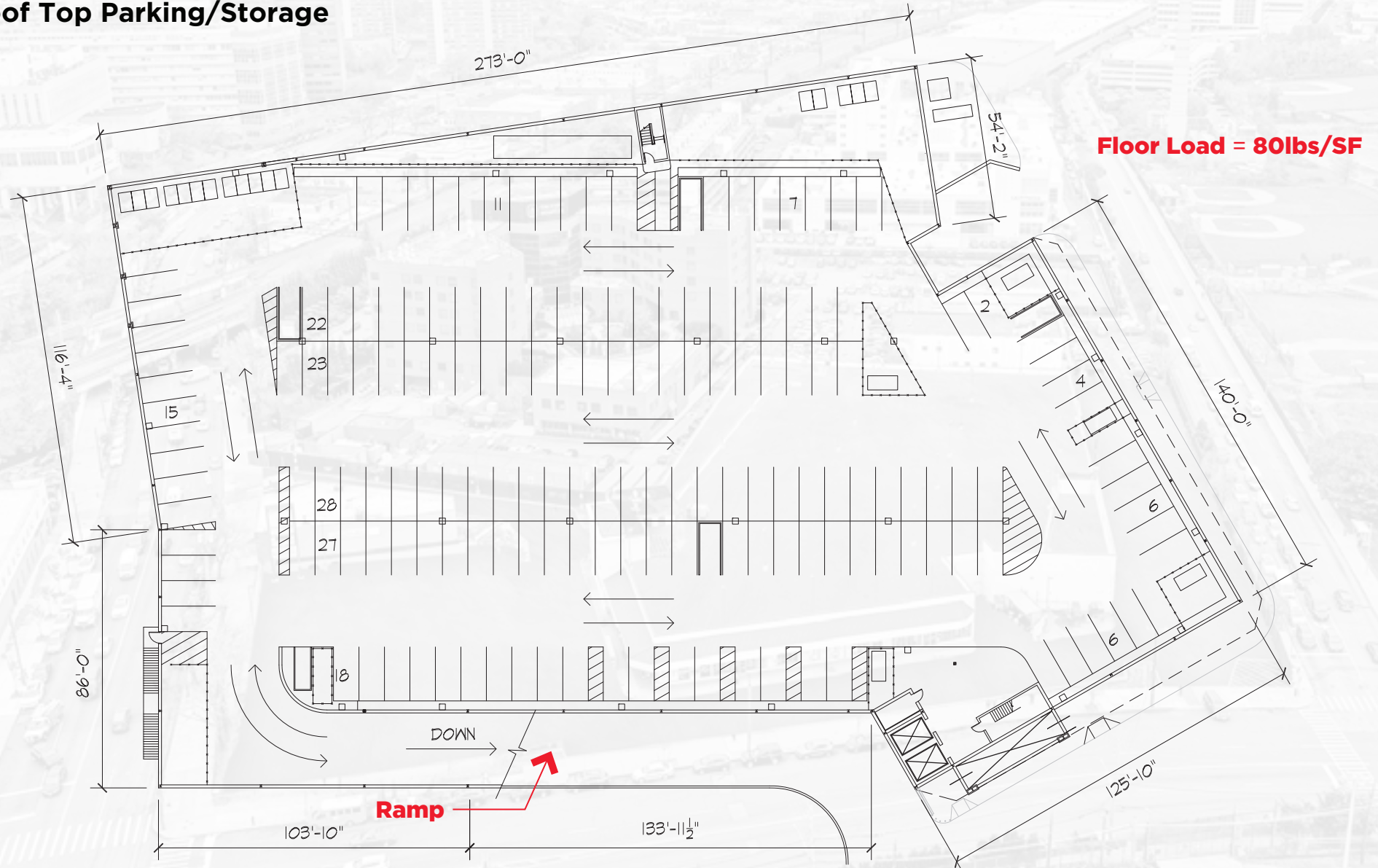
**JOSH GOPAN**  
718.215.3000 x113  
Jgopan@simdev.com

# 1720 Eastchester Road

Bronx, NY 10461



## Roof Top Parking/Storage



**JONATHAN SQUIRES**  
212.660.7775  
Jonathan.Squires@cushwake.com

**JOSHUA KLEINBERG**  
347.368.9160  
Joshua.Kleinberg@cushwake.com

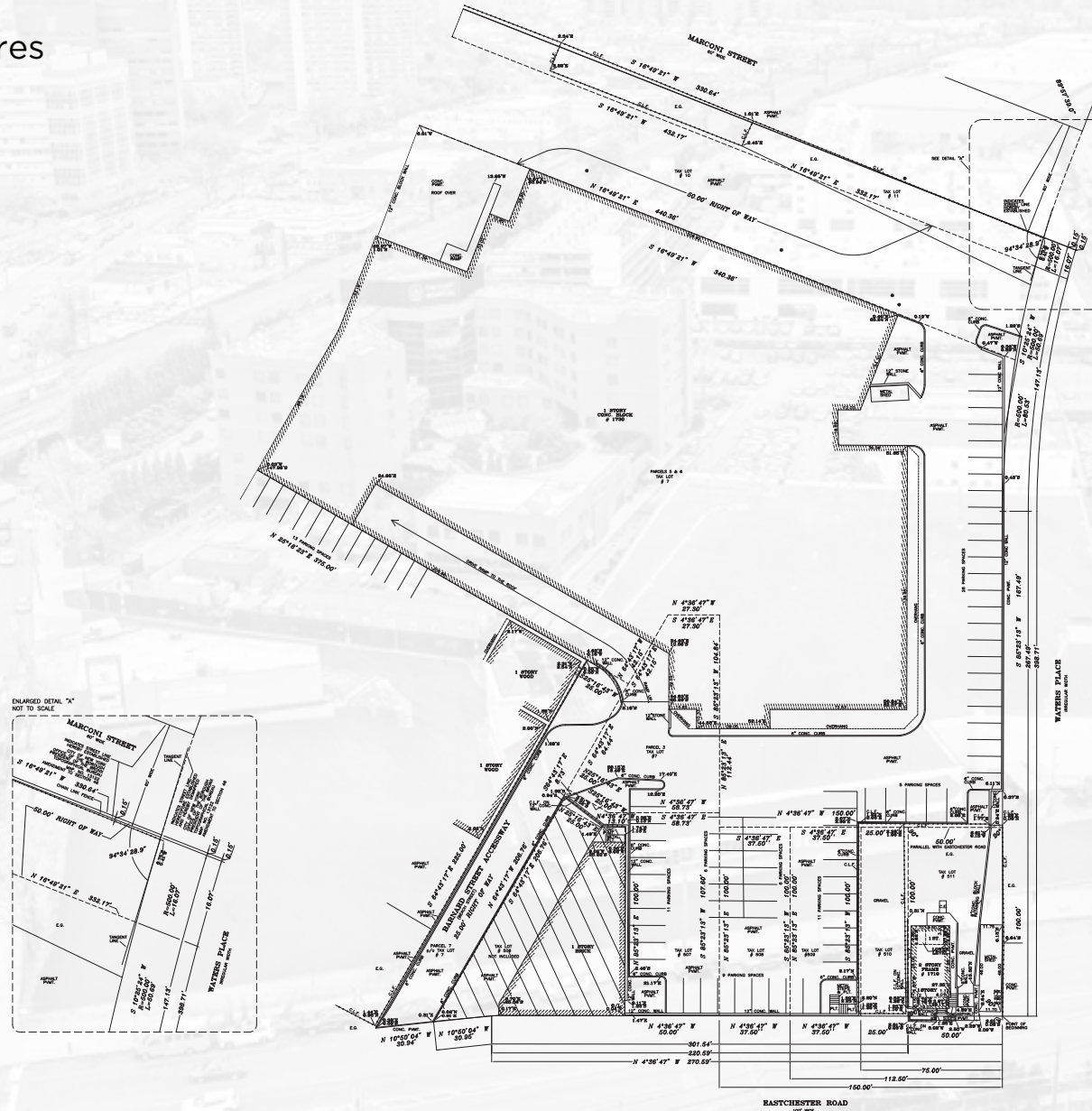
**JOSH GOPAN**  
718.215.3000 x113  
Jgopan@simdev.com



# 1720 Eastchester Road

Bronx, NY 10461

Survey - 3.65 Acres



**JONATHAN SQUIRES**  
212.660.7775  
Jonathan.Squires@cushwake.com

**JOSHUA KLEINBERG**  
347.368.9160  
Joshua.Kleinberg@cushwake.com

**JOSH GOPAN**  
718.215.3000 x113  
Jgopan@simdev.com

# 1720 Eastchester Road

Bronx, NY 10461



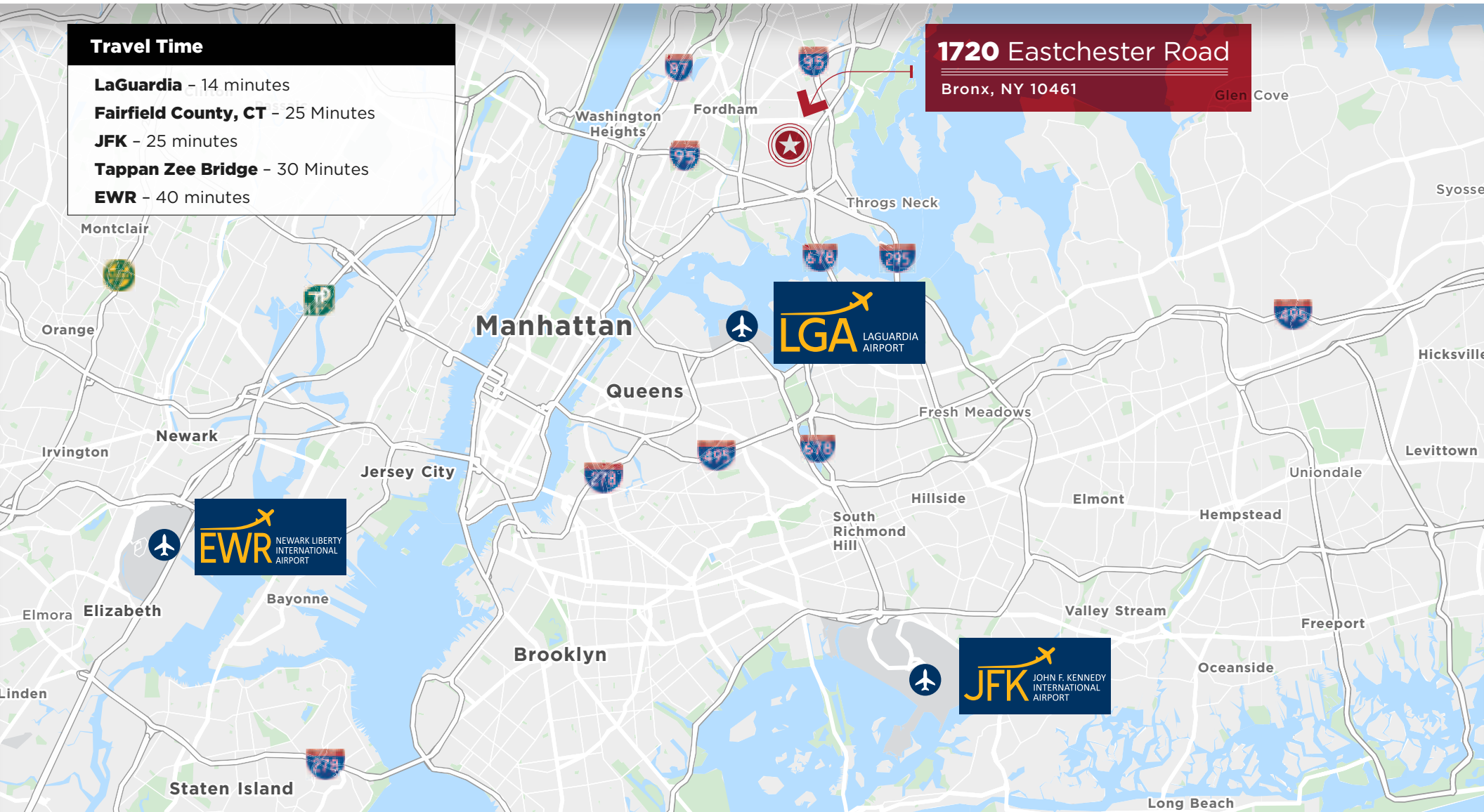
## Location Overview

### Travel Time

- LaGuardia** - 14 minutes
- Fairfield County, CT** - 25 Minutes
- JFK** - 25 minutes
- Tappan Zee Bridge** - 30 Minutes
- EWR** - 40 minutes

### 1720 Eastchester Road

Bronx, NY 10461



**JONATHAN SQUIRES**  
212.660.7775  
Jonathan.Squires@cushwake.com

**JOSHUA KLEINBERG**  
347.368.9160  
Joshua.Kleinberg@cushwake.com

**JOSH GOPAN**  
718.215.3000 x113  
Jgopan@simdev.com