

# 12,400 sf LIC High Ceiling Warehouse Sublease With Parking

30-10 Review Avenue, Long Island City, Queens



# Property Description

**DY Realty Group, LLC** is pleased to announce that it has been retained on an exclusive basis to handle the subleasing of 30-10 Review Avenue in Long Island City, Queens.

Available at the building is a 12,400 sf fenced-off section of the ground floor warehouse. The space features 19' ceiling height, up to 6 vehicle rooftop parking, 3 trailer-deep loading docks and 1 drive-up ramp into the building. Loading is shared with the master tenant, although their operation is largely during off-peak hours.

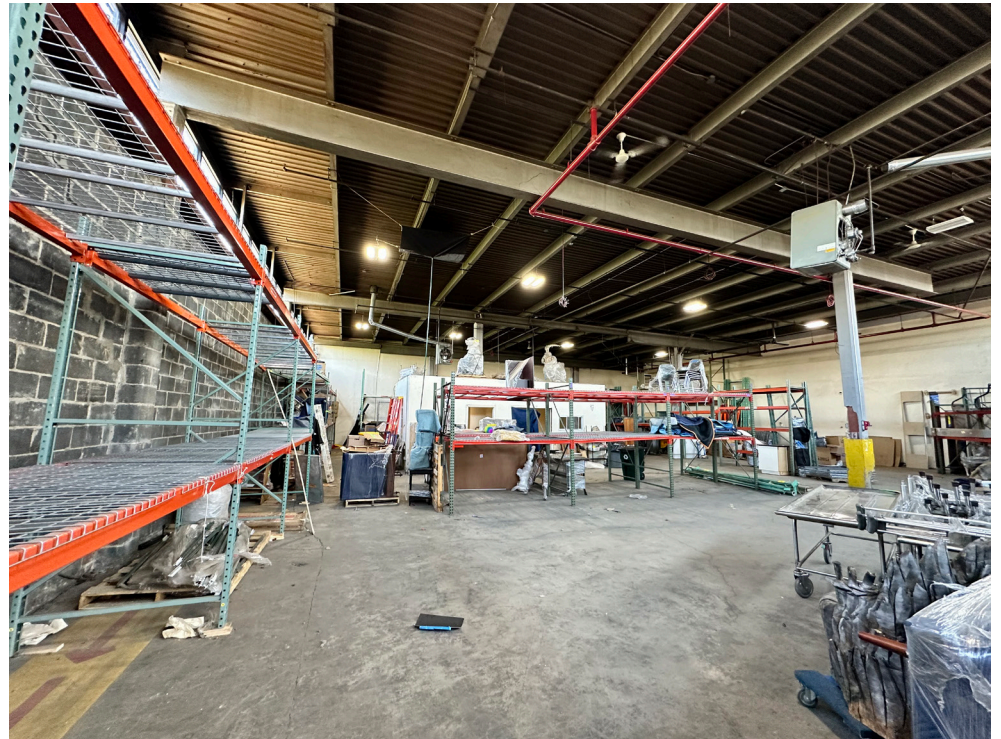
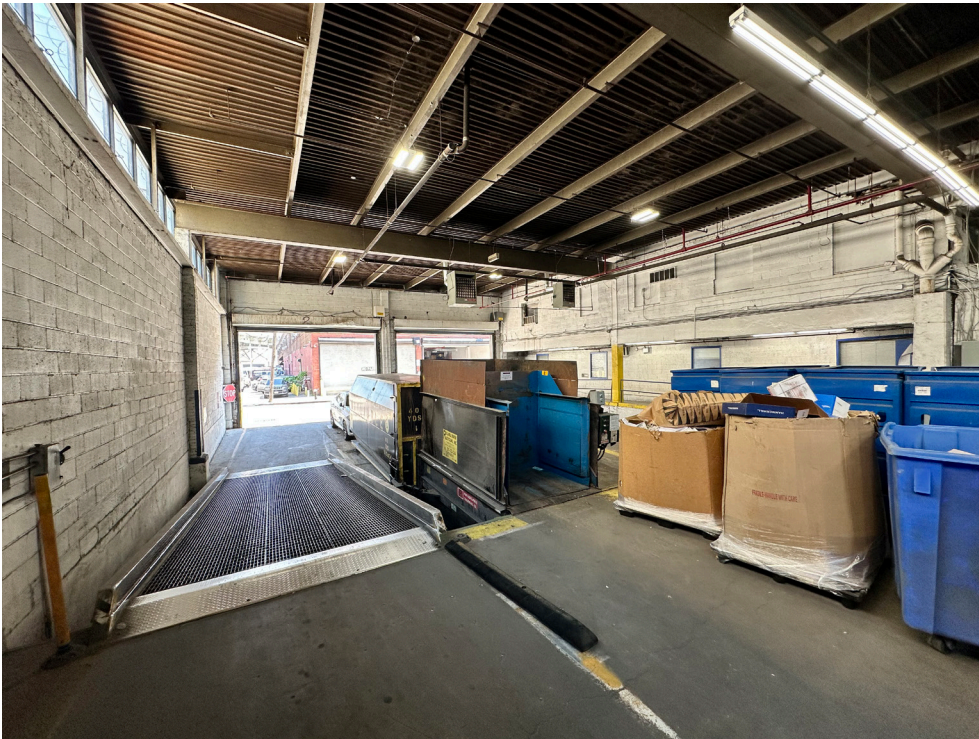
Centrally located in Long Island City, less than a mile to the entrance ramp to the Long Island Expressway and the 7 subway line. Ideal for a wide variety of industrial users.

<b>Total Available</b>	12,400 sf Ground Floor
<b>Rooftop Parking</b>	Up to 6 Vehicles
<b>Loading</b>	3 Trailer-Deep Loading Docks 1 Drive-Up Ramp
<b>Ceiling</b>	19'
<b>Power</b>	Heavy
<b>Zone</b>	M3-1
<b>Block / Lot</b>	294 / 173
<b>Term</b>	Approximately 3 Years
<b>Asking Price</b>	<b>Call or E-mail</b>



ALL INFORMATION IS FROM SOURCES DEEMED RELIABLE, BUT SUBJECT TO: ERRORS, CHANGES WITHOUT NOTICE, PRIOR SALE OR LEASE, WITHDRAWAL WITHOUT NOTICE. ALL MEASUREMENTS ARE APPROXIMATE

# Property Photos



ALL INFORMATION IS FROM SOURCES DEEMED RELIABLE, BUT SUBJECT TO: ERRORS, CHANGES WITHOUT NOTICE, PRIOR SALE OR LEASE, WITHDRAWAL WITHOUT NOTICE. ALL MEASUREMENTS ARE APPROXIMATE

36-36 33RD STREET, SUITE 503 • LONG ISLAND CITY, NY 11106 • 718.729.7474 • WWW.DYREALTY.COM

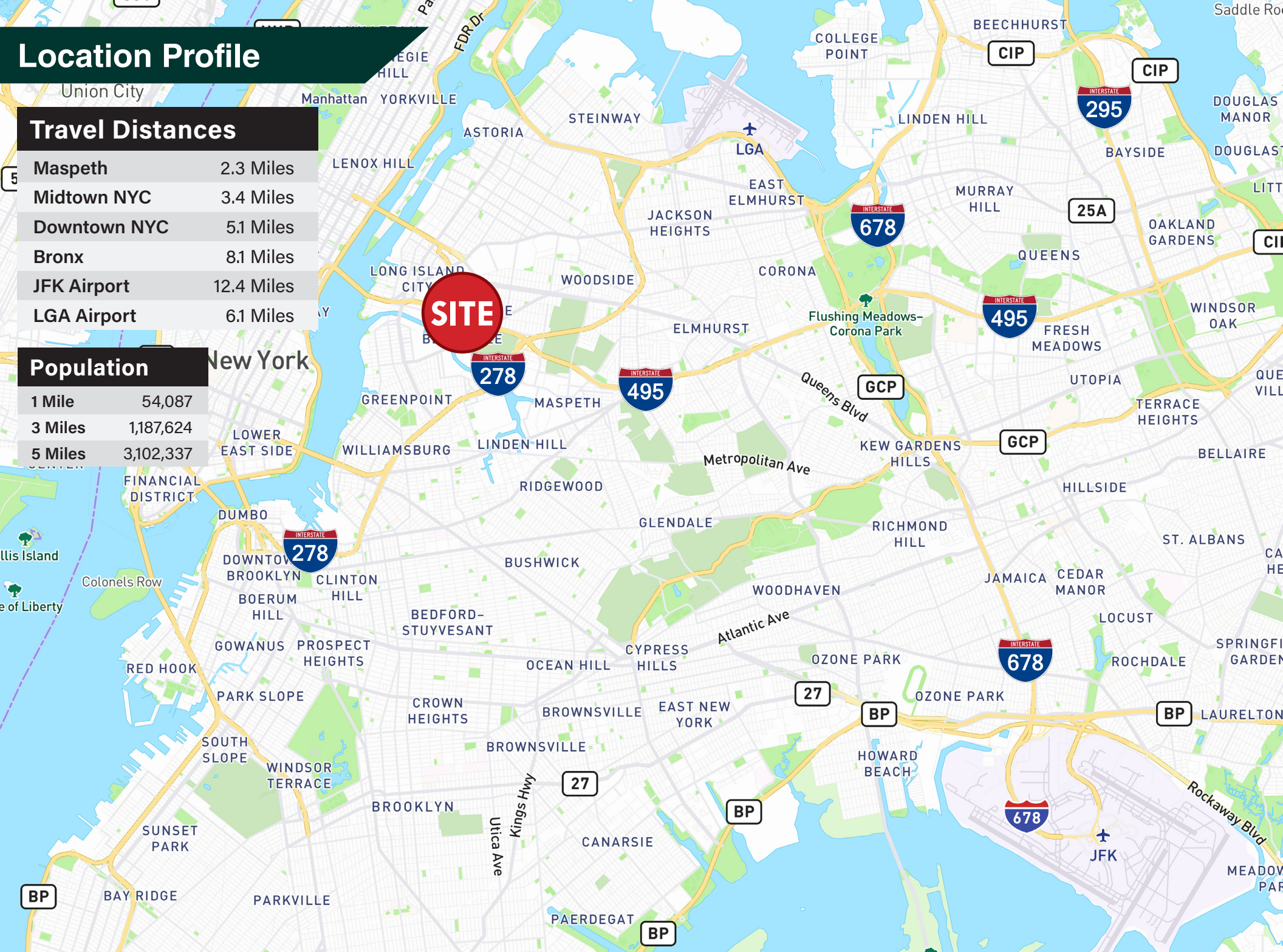
# Location Profile

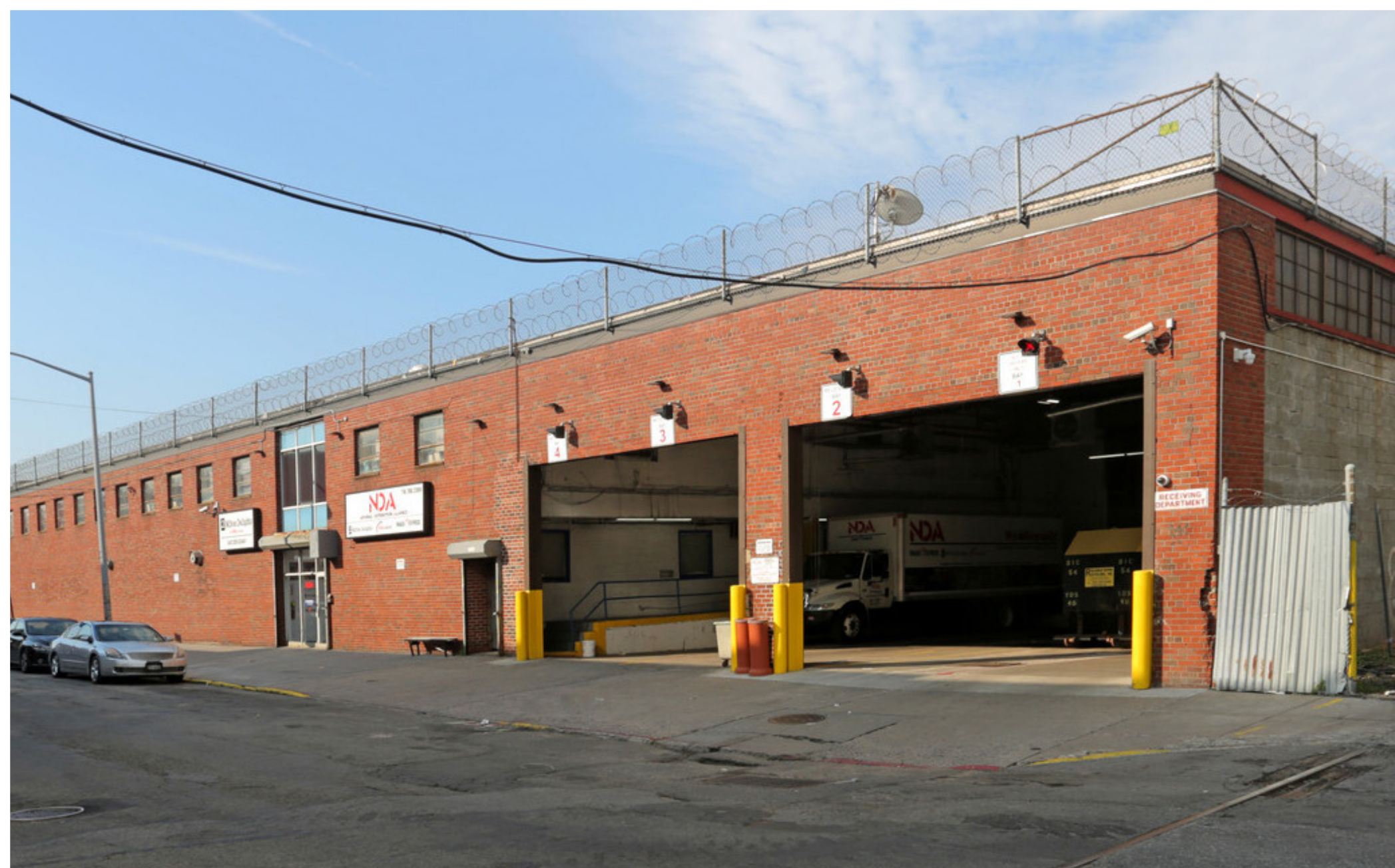
## Travel Distances

Maspeth	2.3 Miles
Midtown NYC	3.4 Miles
Downtown NYC	5.1 Miles
Bronx	8.1 Miles
JFK Airport	12.4 Miles
LGA Airport	6.1 Miles

## Population

1 Mile	54,087
3 Miles	1,187,624
5 Miles	3,102,337





**CONTACT  
EXCLUSIVE  
AGENTS:**

**PAUL CIANCIARUSO**

718.729.7474 x146

[pcianciaruso@dyrealty.com](mailto:pcianciaruso@dyrealty.com)

**PAUL J. YURAS**

718.729.7474 x113

[pyuras@dyrealty.com](mailto:pyuras@dyrealty.com)

**DY**  
REALTY GROUP

ALL INFORMATION IS FROM SOURCES DEEMED RELIABLE, BUT SUBJECT TO: ERRORS, CHANGES WITHOUT NOTICE, PRIOR SALE OR LEASE, WITHDRAWAL WITHOUT NOTICE. ALL MEASUREMENTS ARE APPROXIMATE

36-36 33RD STREET, SUITE 503 • LONG ISLAND CITY, NY 11106 • 718.729.7474 • [WWW.DYREALTY.COM](http://WWW.DYREALTY.COM)