



29,000 sf 2-Story LIC Warehouse & Office Building For Lease

3130 - 3135 31st Place, Long Island City, Queens



Building Description

DY Realty Group has been retained on an exclusive basis to handle the leasing of 3130 - 3135 31st Place in the Long Island City section of Queens.

The building consists of a 29,000 sf 2-story industrial building, including a 15,000 sf ground floor warehouse and a 14,000 sf 2nd floor office. The ground floor has 16' ceiling height and loading through 2 drive-in doors. The second floor office is serviced by a passenger elevator.

Contact the Exclusive Agents for more information or to schedule a tour.

Total Building 29,000 sf 2-Story

Ground Floor 15,000 sf Warehouse

Second Floor 14,000 sf Office

Ceiling Height ±16' Ground Floor

Loading 2 Drive-in Doors

Elevator 1 Passenger

Zone M2-1

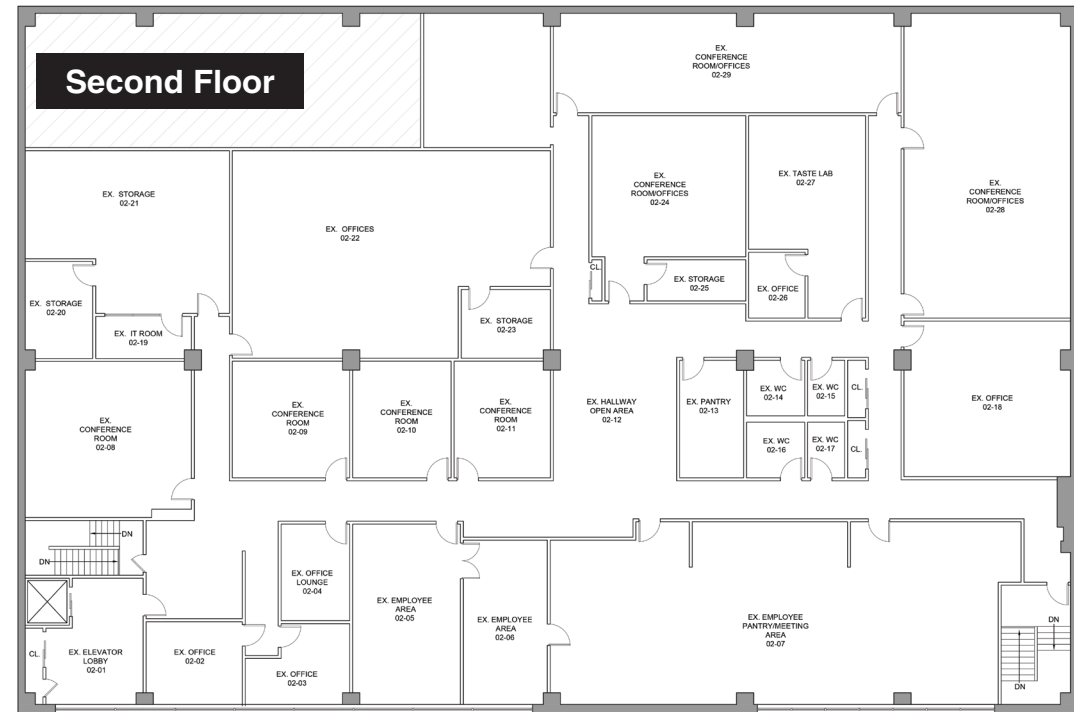
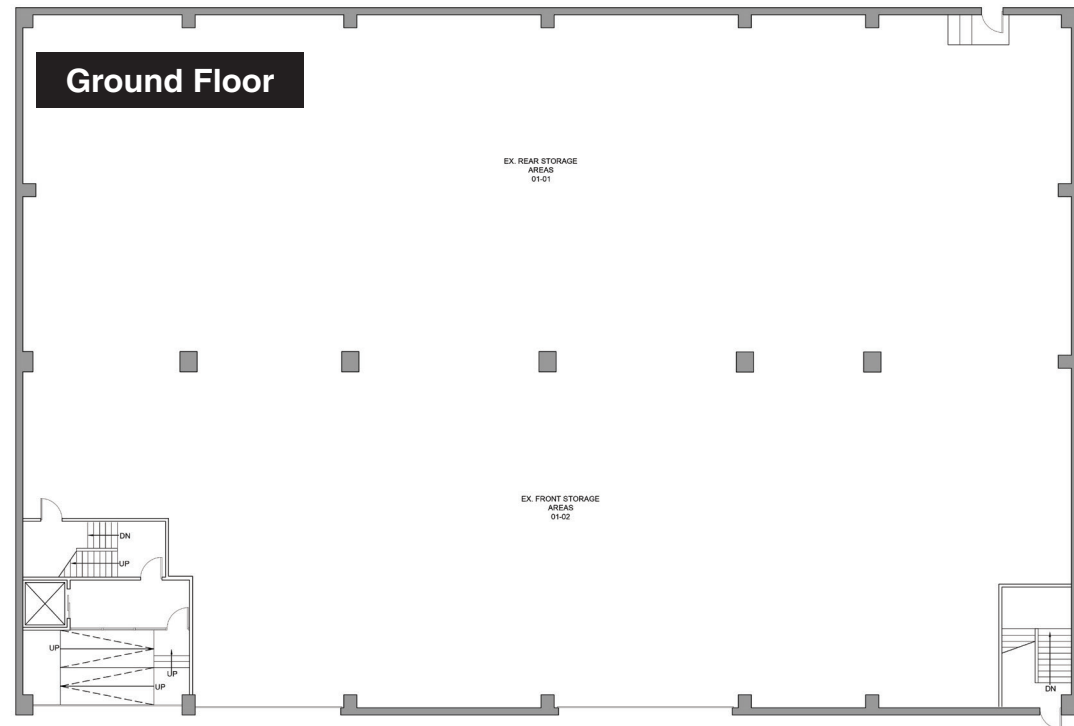
Asking Price *Call or E-mail*



ALL INFORMATION IS FROM SOURCES DEEMED RELIABLE, BUT SUBJECT TO: ERRORS, CHANGES WITHOUT NOTICE, PRIOR SALE OR LEASE, WITHDRAWAL WITHOUT NOTICE. ALL MEASUREMENTS ARE APPROXIMATE.

ALL INFORMATION IS FROM SOURCES DEEMED RELIABLE, BUT SUBJECT TO: ERRORS, CHANGES WITHOUT NOTICE, PRIOR SALE OR LEASE, WITHDRAWAL WITHOUT NOTICE. ALL MEASUREMENTS ARE APPROXIMATE.

Floor Plans



Location Information



3.3 MILES
Midtown NYC

3.3 MILES
Williamsburg

5.6 MILES
LaGuardia Airport

5.2 MILES
Downtown NYC

9.7 MILES
Hunts Point, Bronx

4.9 MILES
Downtown Brooklyn

ALL INFORMATION IS FROM SOURCES DEEMED RELIABLE, BUT SUBJECT TO: ERRORS, CHANGES WITHOUT NOTICE, PRIOR SALE OR LEASE, WITHDRAWAL WITHOUT NOTICE. ALL MEASUREMENTS ARE APPROXIMATE.

ALL INFORMATION IS FROM SOURCES DEEMED RELIABLE, BUT SUBJECT TO: ERRORS, CHANGES WITHOUT NOTICE, PRIOR SALE OR LEASE, WITHDRAWAL WITHOUT NOTICE. ALL MEASUREMENTS ARE APPROXIMATE.



**CONTACT
EXCLUSIVE
AGENTS:**

Ranee Jaber

718.729.7474 x135

917.757.4729 Cell

RJaber@dyrealty.com

Mathew Diana

718.729.7474 x134

718.541.6835 Cell

MDiana@dyrealty.com

